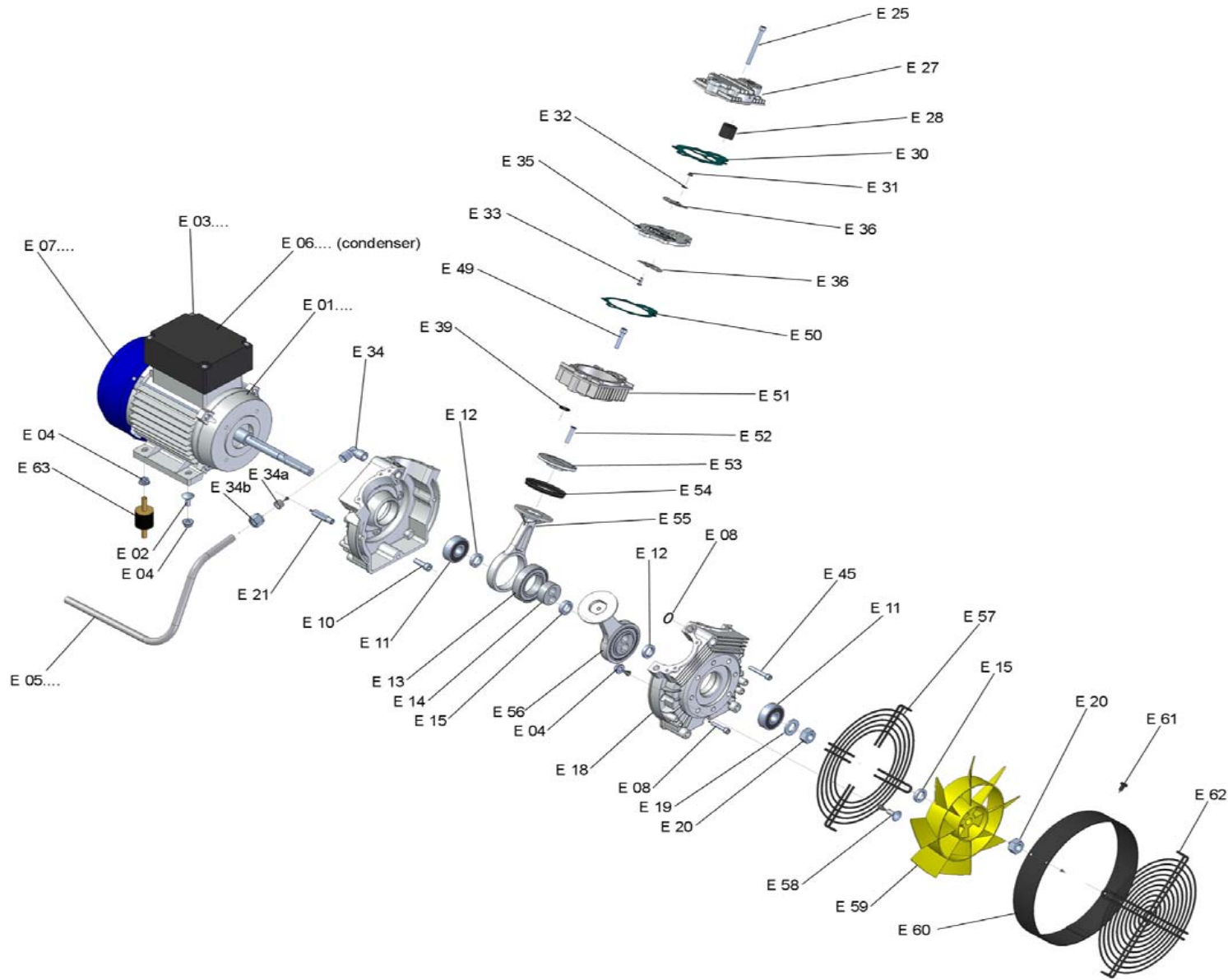




MODELO COMPRESOR:	AIR OL 20/1400 – EXTREME 50 – DENTAL SEC 2CV - EX.SIL 2
CABEZAL:	OL20/1400





CODE	DESCRIPTION	CODE	DESCRIPTION	CODE	DESCRIPTION
E01 2,0*/230-50	Electric motor 2,0 Hp 230 Volt 50 Hz 2800 rpm	E21	Stud bolt	E56	Connecting rod Complete diam.70mm
E02	Screw for electric engine	E27	Head	E57	Metal Wire
E03 S	Plastic cover for electric engine small	E28	Top filter	E58	Screw for metal wire
E03 B	Plastic cover for electric engine Big	E30	Top gasket	E59	Plastic fan
E04	Nut for fixing electric engine	E31	Nut for valve plate	E60	Metal Cover Fan
E05 3T	Aluminum tube tank 3T model 1-1,5 cv	E32	Washer for valve plate	E61	Screw for cover fan
E05 3T 2CV	Aluminum tube AIR OL 20/1400	E33	Screw for valve plate	E62	Metal Wire
EO5 3-50L 2CV	Aluminum tube EXTREME 50	E34	Air exit connector	E63	No vibration rubber
E05 DENT.	Flexible tube DENTAL SEC 2CV	E34 A	Ogive for aluminum tube		
E06	Condensador 40mf	E34 B	Nut for tube diam. 12 mm aluminum		
E07 MEC 90	Cover fan for electric engine MEC 90	E35	Valve plate		
E08	Screw for fixing monobloc	E36	Lamella		
E09 + E18	Compressor Monobloc + E18	E39	Cylinder O-ring		
E10	Screw for fixing compressor monobloc	E44	O-ring for compressor monobloc		
E11	Bearing for compressor monobloc	E45	Screw for fixing compressor monobloc		
E12	Trick ness bearing short 5,5 mm	E49	Screw for fixing head cyl. diam.70mm		
E13	Bearing for connecting rod	E50	Cylinder gasket 0,8 mm diam.70mm		
E14	Eccentric	E51 A	Cylinder Chrome HIGH diam.70mm		
E15	Trick ness bearing high 7,0 mm	E52	Screw for piston top cyl. diam.70mm		
E18 + E09	Compressor Monobloc + E09	E53	Piston top diam.70mm		
E19	Washer	E54	Piston seal diam.70mm		
E20	Nut M16	E55	Connecting rod diam.70mm		